

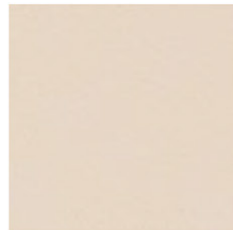
SKAI BASIC

seona

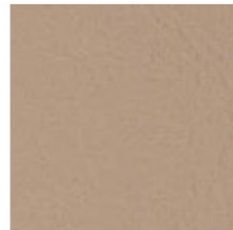
Ladenbau & Design




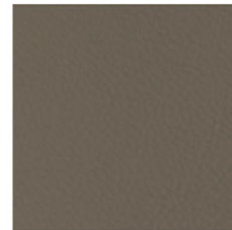
BASIC B 02




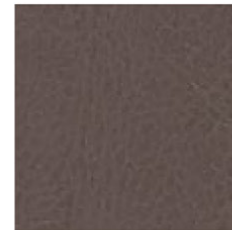
BASIC B 40




BASIC B 08 



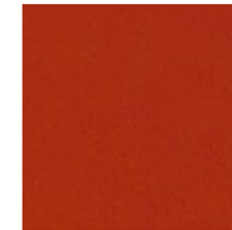
BASIC B 64 



BASIC B 09 



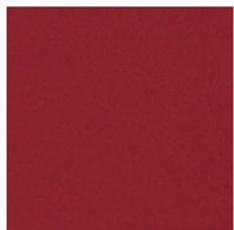
BASIC B 65 



BASIC B 44




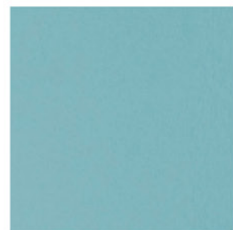
BASIC B 05



BASIC B 48



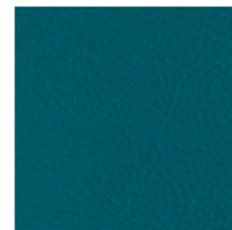
BASIC B 12 




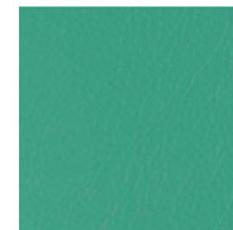
BASIC B 49



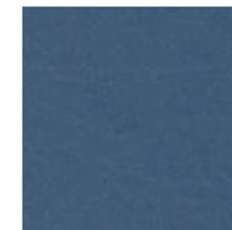
BASIC B 68 



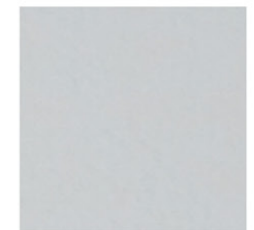
BASIC B 63 



BASIC B 69 



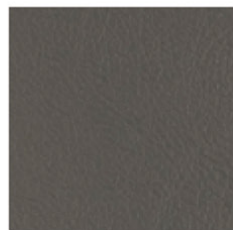
BASIC B 51




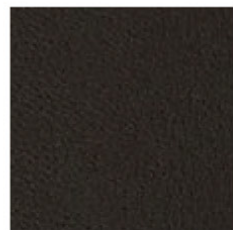
BASIC B 45



BASIC B 28



BASIC B 67 




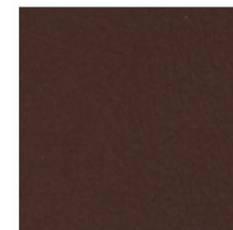
BASIC B 03



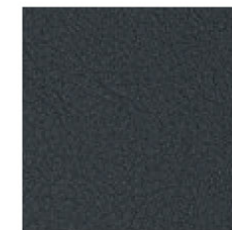
BASIC B 11 



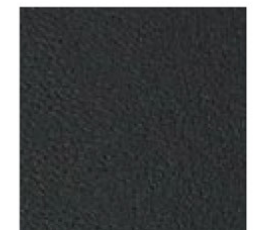
BASIC B 66 



BASIC B 41



BASIC B 22



BASIC B 01



BASIC M 01



- IGNIFUGO
- FIREPROOF
- RÉSISTANT AU FEU
- FEUERFEST



UE Standards
EN1021-1+2

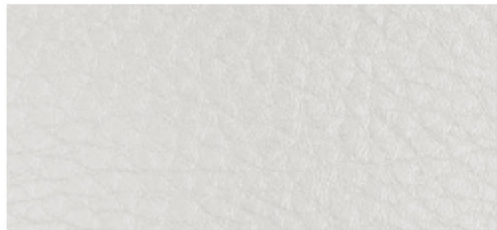


UNI 9175: 2010

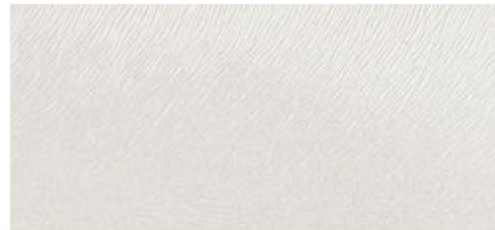
SKAI SPECIAL

seona

Ladenbau & Design



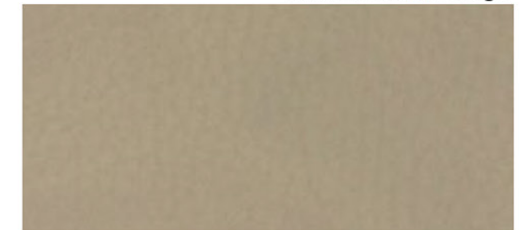
SPECIAL S 13



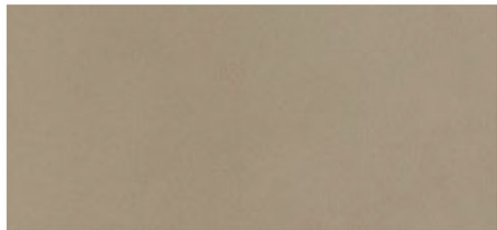
SPECIAL S 01



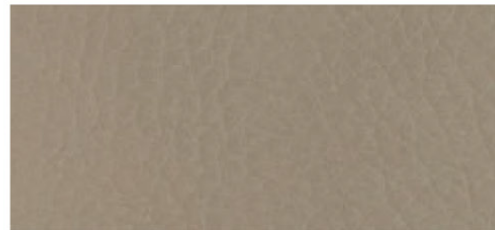
SPECIAL S 07



SPECIAL S 91



SPECIAL S A5



SPECIAL S 49



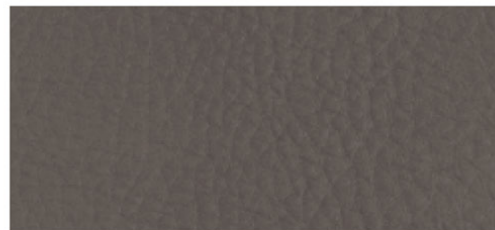
SPECIAL S A4



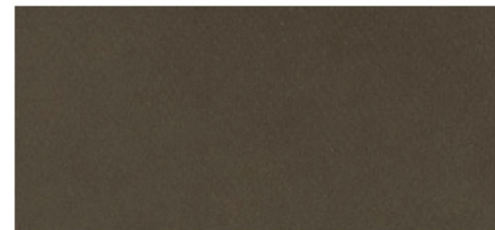
SPECIAL S 08



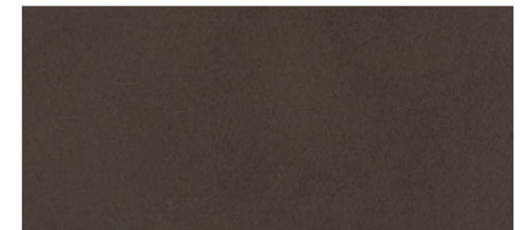
SPECIAL S 03



SPECIAL S 48



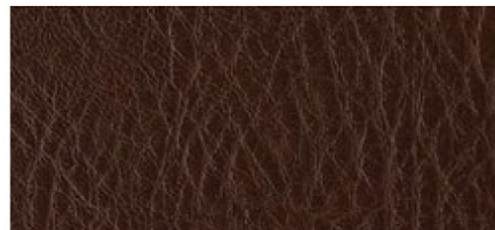
SPECIAL S A1



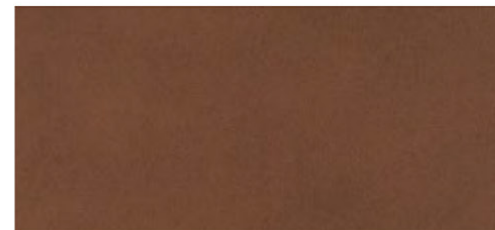
SPECIAL S A7



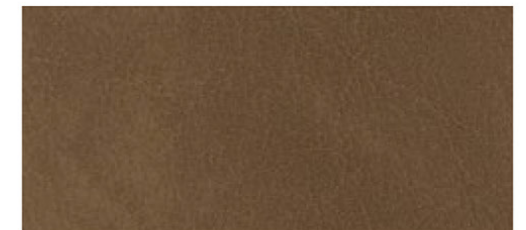
SPECIAL S 09



SPECIAL S 10



SPECIAL S A8



SPECIAL S C1



UE Standards
EN1021-1+2



UNI 9175: 2010

SKAI SPECIAL

seona

Ladenbau & Design



SPECIAL S 06



SPECIAL S B1



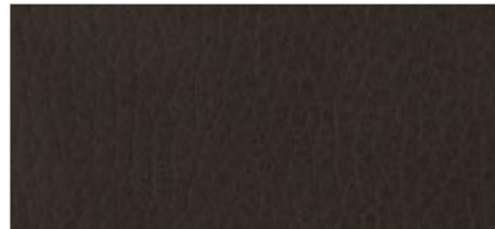
SPECIAL S B2



SPECIAL S 11



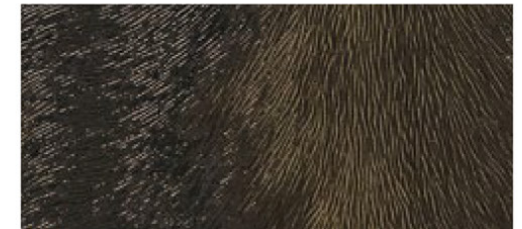
SPECIAL S 17



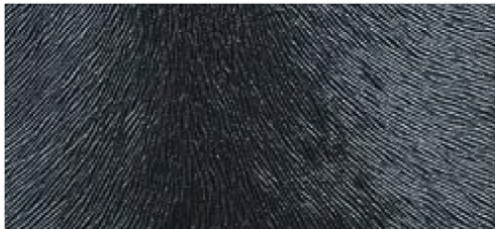
SPECIAL S 38



SPECIAL S 29



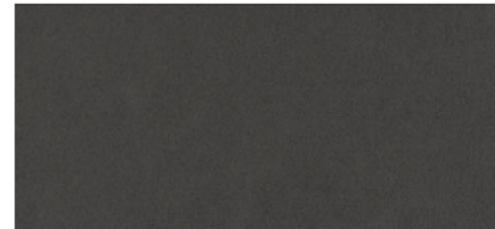
SPECIAL S 05



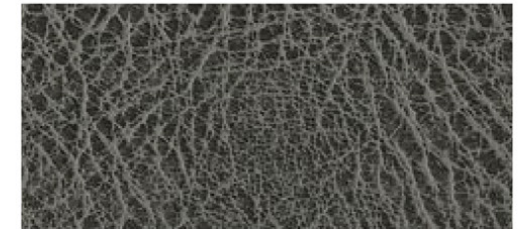
SPECIAL S 04



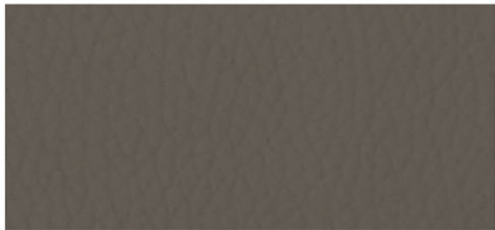
SPECIAL S 46



SPECIAL S A6



SPECIAL S 31



SPECIAL S 37



SPECIAL S A2



SPECIAL S 45



SPECIAL S 50



UE Standards
EN1021-1+2



UNI 9175: 2010

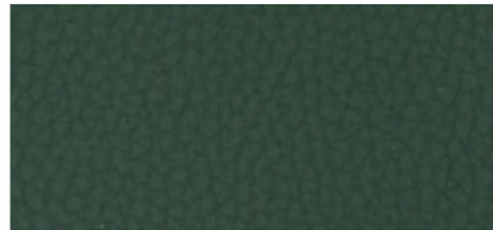
SKAI SPECIAL

seona

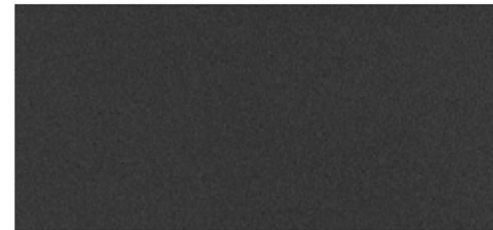
Ladenbau & Design



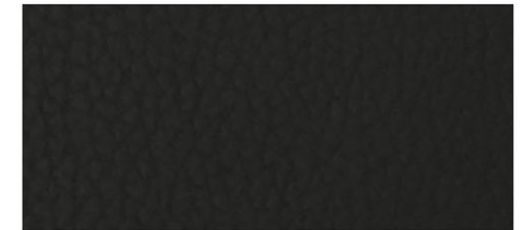
SPECIAL S 47



SPECIAL S 90



SPECIAL S A3



SPECIAL S 35



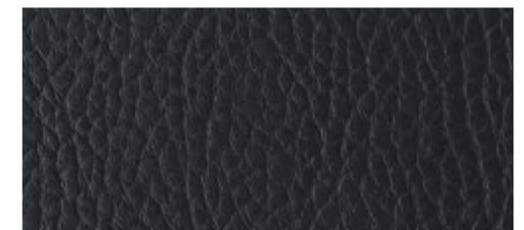
SPECIAL S 12



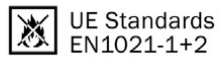
SPECIAL S 98



SPECIAL S 30



SPECIAL S 18



UE Standards
EN1021-1+2



UNI 9175: 2010

Achtung: Unsere Skai sind nicht schmutzabweisend.

Reinigung: Einfach mit lauwarmem Wasser und einem Mikrofasertuch reinigen.

Bitte verwenden Sie keine Lösungsmittel, Chloride, Scheuermittel, chemische Reinigungsmittel oder Wachspoliermittel. Farbflecken sind umgehend zu entfernen. Keine Öl- oder fetthaltigen Mittel verwenden.